

## Competition School Nippes, Colonge-Longerich (GER)

project **new construction of a comprehensive school** awarding authority **City of Cologne (GER)** team **WW+, Esch/Alzette (LUX), R+T Topp Huber-Erler Hagedorn, Darmstadt (GER), BLS Energieplan, Berlin (GER), ernst+partner landschaftsarchitekten, Trier (GER)** gfa **13.447 m<sup>2</sup>** ufa **9.819 m<sup>2</sup>** gv **62.183 m<sup>3</sup>** competition phase **03/2012 - 05/2012** restricted competition participation

### Genius Loci – comprehensive school in the flow of nature

The particular characteristics of this school's location in a nature reserve and on the outskirts of a quiet garden-city residential area provide only tangential specifications for urban planning references. The result is a basic concept of the school in the flow of nature. Through the development of its own centre, the building radiates in all directions. The architectonic concept foresees a compact building form in a bid to reduce built surfaces in favour of green surroundings. It places special emphasis on a harmonious embedding into the surrounding nature reserve area. Through its independent shape, the building forms a clear, distinctive conclusion to the adjoining railway line, while also opening up to the northern suburb of Longerich through its idiosyncratic scattered layout of the ground floor. Throughout the individual levels, four building wings are joined in the shape of a rectangle around the school's central inner courtyard. On the ground floor, the green outer courtyards and the dispersed block structure create a flowing connection between the comprehensive school and the existing nature and green environment.

### Uses

The various school areas are purposely distributed over three levels, to ensure the harmony with nature is palpable on all levels and so as not to extend beyond the tree tops. The ground floor accommodates the reception area as well as commonly used areas such as the forum, the canteen and the sports hall borrowed in the basement, while the two upper floors house the administration offices and classrooms.

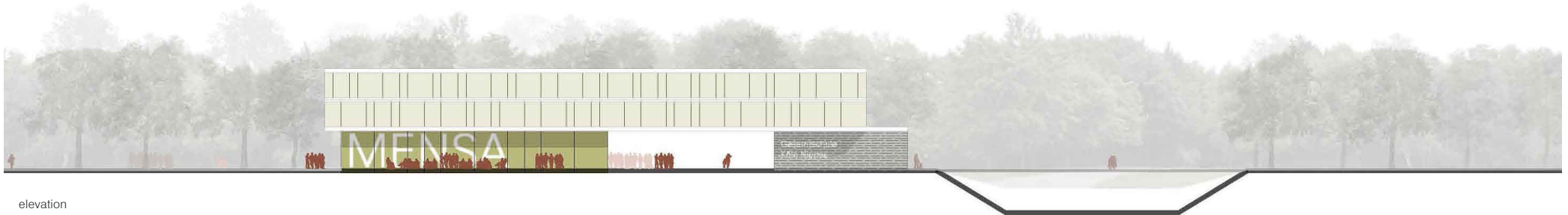
### Design concept

A design has been created that offers pupils a sense of comfort and direction thanks to its circular arrangement and clear structure. At the same time openness and transparency are achieved through the targeted use of material, light and openings. The educational concept of the comprehensive school, providing pupils with a solid basic knowledge (structure and orientation) while also encouraging autonomy and individual self-reliance (openness and vision), is therefore reflected in the architecture of the building.





section



elevation

