

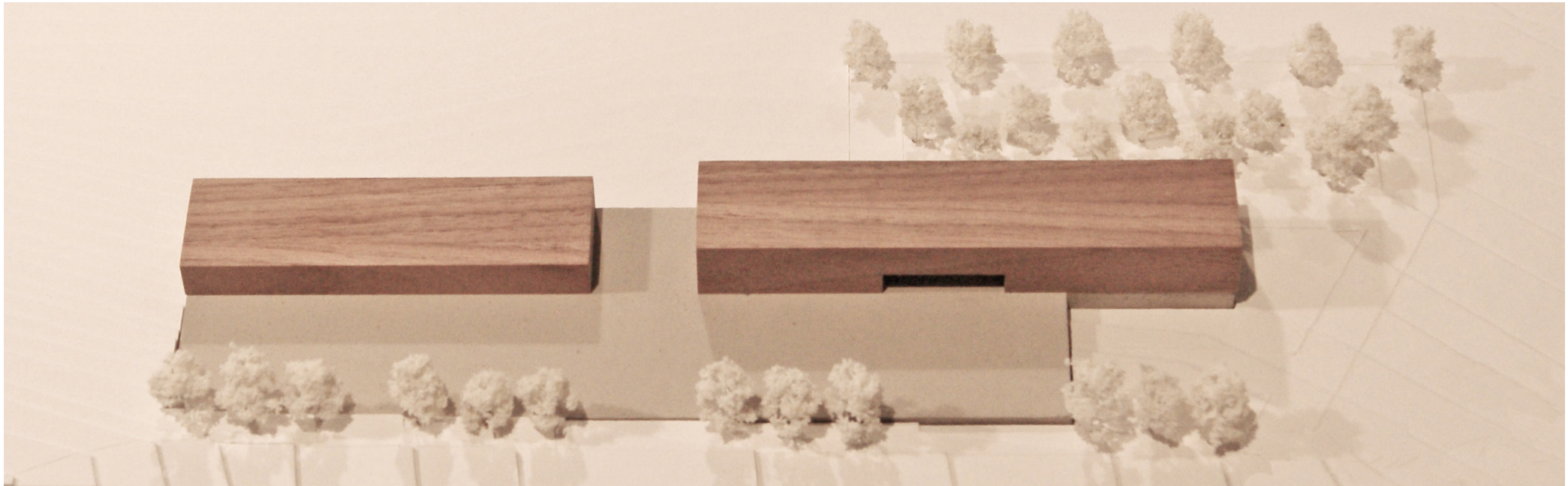
## Competition KNE Niederprüm (GER)

project **new construction of operations premises and administrative building for KNE headquarters** awarding authority **Kommunale Netze Eifel-AöR, Prüm (GER)** team **WW+, Esch-sur-Alzette/Trier (LUX/GER), Werner Schaack, Trier (GER), Ingenieurbüro Dieter Lohner, Trier (GER), Ingenieurbüro Weber, Gransdorf (GER), HDK Dutt+Kist, Saarbrücken (GER)** gfa **2.840 m²** ufa **2.270 m²** gv **10.715 m³** total area **2 ha** net construction **costs 2.450.000 €** competition phase **09/2011 - 11/2011** restricted competition **2nd price comission based on negotiated procedure**

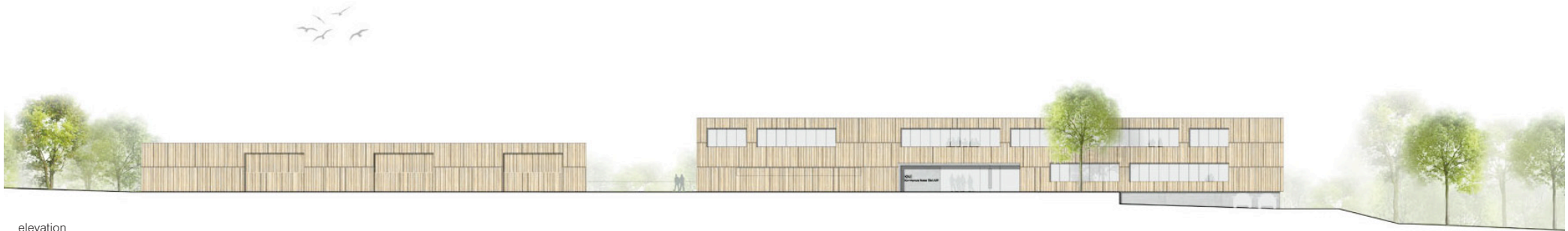
### Genius Loci – blending into the undulating Eifel landscape

The new construction of the operations premises and administrative building for the headquarters of the future-oriented company KNE represents – from an urban planning point of view – the important start of the upcoming expansion of the L11 commercial zone in Niederprüm. The distinct cubic building with its eye-catching length assertively blends into the steep terrain of the hilly landscape. The building forms a landmark in the natural setting, at the three-way junction of the B410 and the L11. The massive concrete base absorbs the ground slope and fits into the existing topography, connecting the two-storey administrative building and the operations premises separated by the depot yard. The building ensemble is characterised by a fronted vertical timber cladding and blends in well with the surrounding landscape. The exterior materiality captures the ecological vision of the company and reflects the landscape-influenced location of the building.





elevation



elevation