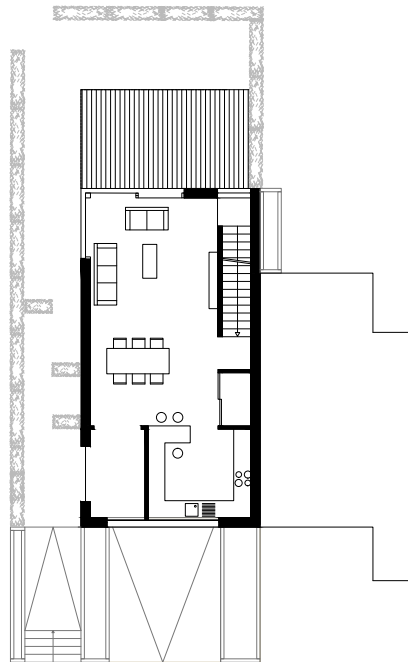


## MK 28, Esch-sur-Alzette (LUX)

project **construction of a single-family home** client **private** planning services **WW+** **complete architecture services** partner: civil engineering **GK Engineering, Esch-sur-Alzette (LUX)**  
gfa **377 m<sup>2</sup>** ufa **201 m<sup>2</sup>** gv **1.107 m<sup>3</sup>** total area **216 m<sup>2</sup>** start of planning **11/2008** realisation **06/2010 - 09/2011**

This single-family home and its outdoor areas were created on a vacant plot in the city of Esch-sur-Alzette. The structure is semi-detached and in terms of height copies the neighbouring property so that it blends exceptionally well into the streetscape. As a result, the house boasts three full storeys, an attic and an additional complete basement. This has resulted in the creation of a comfortable living space for a family of five despite a relatively small base area. The ground floor is home exclusively to the living and dining areas and the kitchen, leaving the upper floors to house the private areas. The individual rooms are oriented and exposed towards the garden or the front. The ancillary rooms such as the bathrooms, storage rooms, etc. are essentially placed along the gable end and foreseen with narrow lighting strips. The living areas are furthermore enhanced by space-saving built-in furniture variations throughout the entire dwelling. The required energy is provided via gas heating and a solar system. A ventilation system ensures a controlled living area ventilation with heat recovery.



floor plan



