

MdM II, Esch-sur-Alzette (LUX)

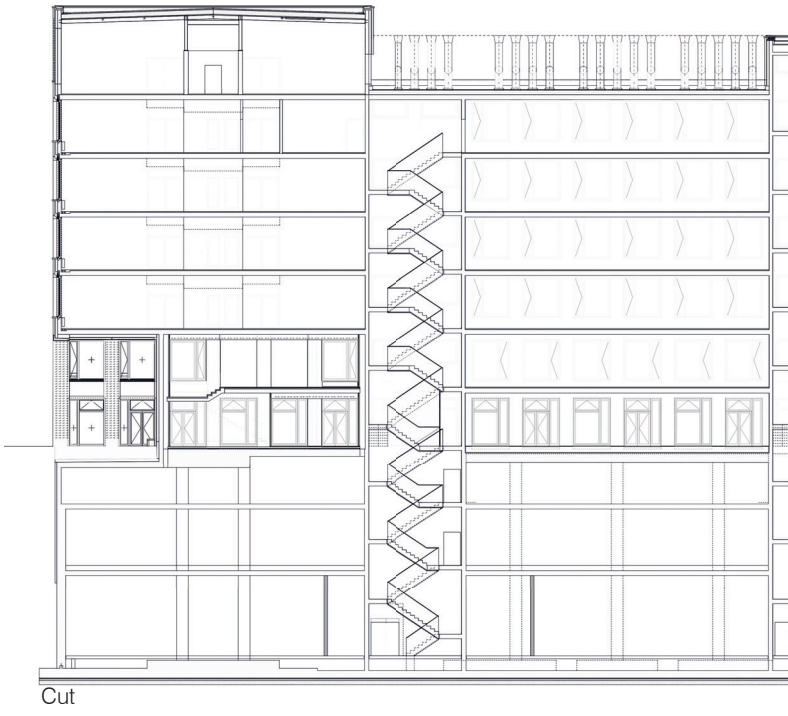
project	construction of an new laboratory building for material research ‘BATIMENT LABORATOIRES AILE SUD’ located on the science campus ‘LA CITE DES SCIENCES A BELVAL’ of the university of Luxemburg
client	Le Fonds Belval, Esch-sur-Alzette (LUX) / public client
services	WW+, Esch-sur-Alzette (LUX) / Trier (GER) architecture HOAI LPH 6-8
architecture	in cooperation with BEHLES & JOCHIMSEN, Berlin (GER)
grafics	BEHLES & JOCHIMSEN
facts	- laboratory building with flexible use of space - clinker facade
dates and numbers	
gfa	18.900 m²
ufa	12.400 m²
gv	83.000 m³
net construction c.	36.100.000 €
start of planning	2009
realisation	2012 - 12/2020



The university is under development, the users remain largely unknown. The requirement is for flexible surfaces that can be managed economically. The L-shaped main structure responds to its high-profile location at the head of the ‘Place de l’Université’ with a tower-like elevation on the corner and an opening sequence featuring a loggia-exhibition hall-foyer. The first floor houses seminar rooms and laboratories which are accessed over the four cores distributed on this level. The building wing alongside the square features industrial spaces on its ground floor, while the second wing houses heavy-duty laboratories. A depth of 20 m, a load-bearing façade and standardised central shafts, structurally effective, allow a configuration of column-free open-plan laboratories as well as two or three-room corridors. Three units per floor with up to 530 m² that can be divided up as required are flanked by the core areas, which include the service and communication areas and are shown as recessed in the building structure. The façade exhibits an excellent A/V relationship, an optimised number of openings, windows with triple glazing as well as external sun protection. It contains low-maintenance brick (block bond with protruding headers). The building is scheduled to be a low-energy house.



Ground plan



Cut

