

## Model house Nonnewisen type 160, Esch/Alzette (LUX)

project **Construction of a model house type 160** client **Ville d'Esch-sur-Alzette (LUX)** start of planning **2006** start of construction **2009** gross floor area **305 m<sup>2</sup>** volume **1.760 m<sup>3</sup>**

Living in the middle of nature and still living in the city. One-of-a-kind residence and life quality.

### General

The residential houses Nonnewisen type 160, type 180 and type 200 have been designed as model houses for the city of Esch-sur-Alzette. They are located in the southern part of the new residential area Nonnewisen and south of the main development Boulevard Nonnewisen. The new district is set up like a finger structure with alternating building bands and public green areas.

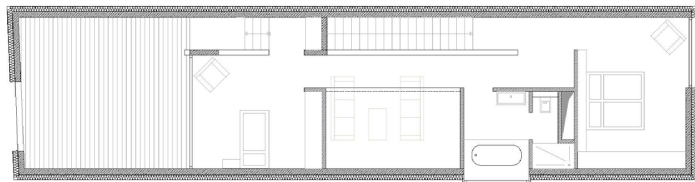
Here the types 160, 180 and 200 are adapting to the premises 2SD3, 2SD2 and 2SD1.

### Type 160:

A clear cover with big openings encloses a very dynamic floor plan. The open living and dining area on the ground floor is separated from each other by a height step. As a consequence there are large ceiling heights with a view to the upper floor.

On the upper floor there's a bedroom, a bathroom and a room with a projecting roof terrace.

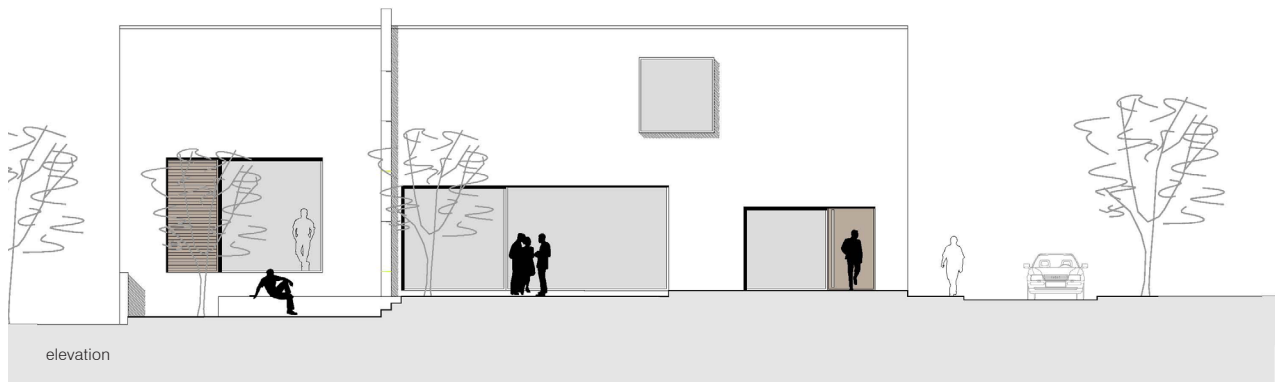
The garden and the terrace get some kind of courtyard character through the carport and by this keep the privacy of the owner. The façade remains closed towards the neighborhood.



floor plan UF



floor plan GF



elevation