

## Model house Nonnewisen type 200, Esch/Alzette (LUX)

project **Construction of a model house type 200** client **Ville d'Esch-sur-Alzette (LUX)** start of planning **2006** start of construction **2009** gross floor area **360 m<sup>2</sup>** volume **1.615 m<sup>3</sup>**

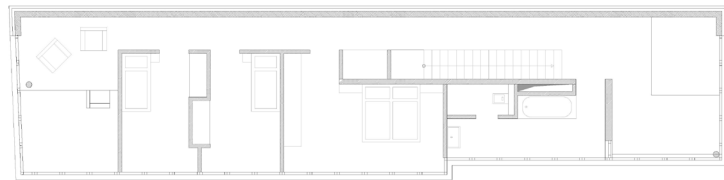
Living in the middle of nature and still living in the city. One-of-a-kind residence and life quality.

### Type 200:

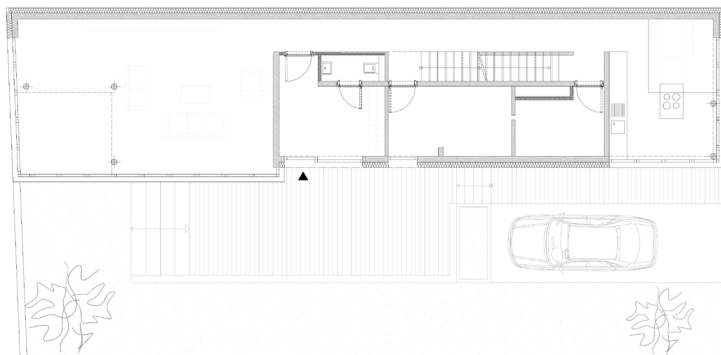
The complete glazed façade is covered by a post and rail construction, which lets the building appear very transparently. The generous living area and the kitchen on the ground floor are separated from each other by a long corridor at the close side of the façade.

Communication of the floors is enabled by free spaces around the kitchen and in the living area.

On the upper floor there's a sleeping room, two children's rooms and a bathroom. Small galleries are assigned to the free spaces. The projecting balcony provides an outskirt area for bedroom and bathroom.



floor plan UF



floor plan GF



elevation