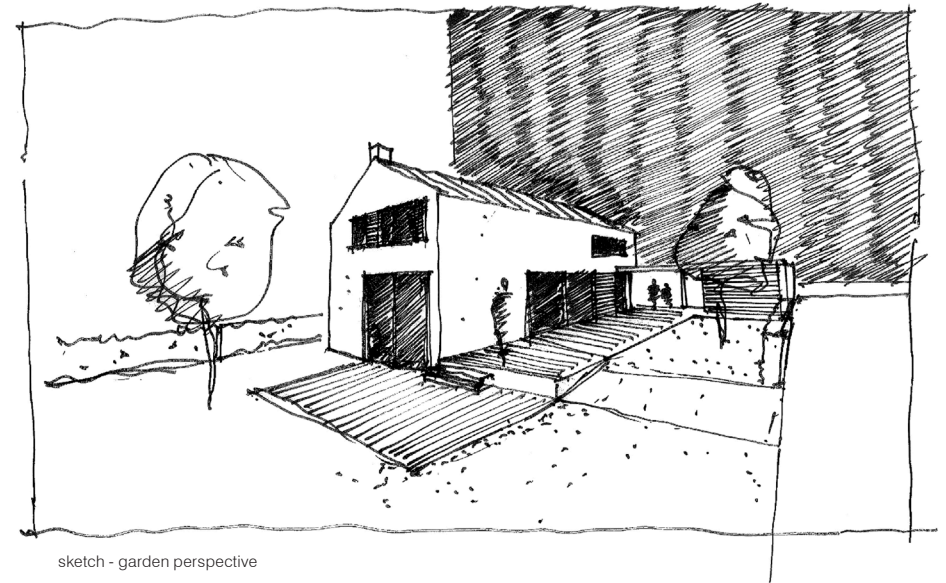


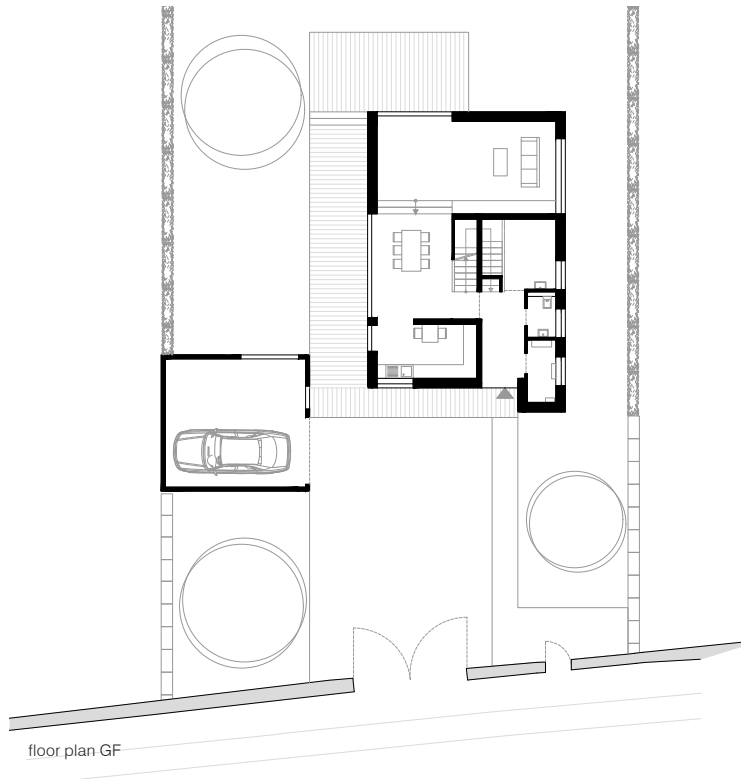
House RC, Roeser (LUX)

project **New construction of a single - family house** client **Private** complete architecture services **WW+, Esch-sur-Alzette/Trier (LUX/GER)** civil engineering **Simtech, Berchem (LUX)** gfa **196 m²** ufa **132 m²** gv **1.029 m³** total area **1 ha** start of planning **11/2011** start of realisation **04/2013 - 06/2014**

The plot of land lies in the centre of the municipality, on a vacant bit of meadow. Towards the road, the plot is defined by an existing, approximately 2 metre high solid wall, while at the rear it slopes slightly towards the Alzette. The house and the attached garage are designed to embody – together with the existing wall – the character of a courtyard. The main body evokes a clear and simple language in terms of material, form and colour. The house unfolds around a central dining area, which is accentuated in particular by an skylight. The kitchen is on the same level. The living area is oriented towards the garden, responding to its topographical features and positioned approximately half a metre deeper. The staircase is a feature element that highlights the generosity of the room. The two-storey low-energy house is supplied by a geothermal heat pump.



sketch - garden perspective



floor plan GF



