

Extension Hotel Heil, Lösnich (GER)

project **extension of an hotel and construction of a terrace** client **Monika and Albert Heil**
planning **WW + architektur + management, Esch-sur-Alzette (LUX)** gross floor space
1.422 m² gross volume **2.285 m³** start of planning **2008** start of execution **2009** completion
05/2010

Concept

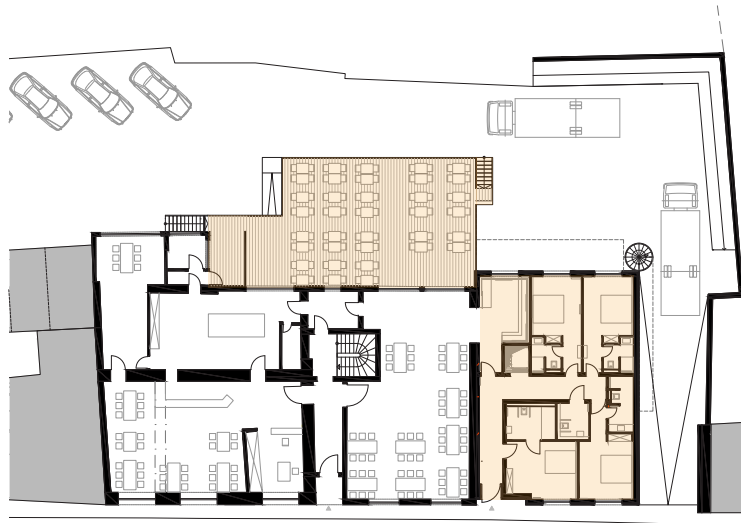
The hotel with its 38 beds, located in the wine village Lösnich near Berncastel-Kues, is extended by another 32 beds. The project is completed by a passenger lift, an open terrace with 100 seats as well as the conception of the laundry.

The scope of work is complemented by the modernization of the existing building and the installation of a block heating station.

The clear optical standing out of the extension, which adapts to the building as a cube, was planned consciously in this way. However, the new building adapts to the surroundings through its cubature and its easy form language, thus making it possible to embed modern architecture in the village, with a calm influence on the environment.

The new form language is emphasised by the recessed entrance and the flat roof with its extensive planting.

The large window surfaces of the hotel rooms, most of them with view to the river Mosel, and the modern equipment of the rooms ensure a high residential quality.



floor plan



