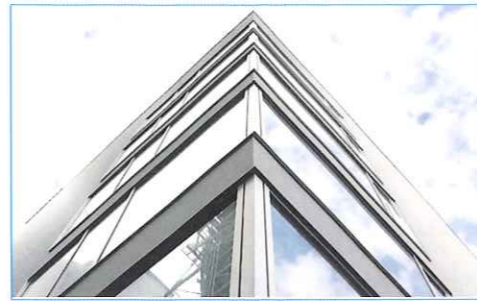


Annual Report 2010/2011

Luxembourg Centre for Systems Biomedicine

»Building up«



LCSB in Belval

Planning, Building, Moving

In summer 2011, the LCSB moved into its new laboratory building »House of Biomedicine« in Belval, the future location of the University of Luxembourg in Esch-sur-Alzette. The construction had already been planned before the concept for the LCSB was ready. Nevertheless, everything came into place nicely. Thanks to flexible architecture - and a great deal of planning even during construction.

Spring 2011: »Mind the step!« Zino Hemgesberg, LCSB project manager for the new construction in Belval, warns in front of a gap below the landing of the last stair: »This is pretty much the only thing that went wrong in planning and needs to be reworked - and only because the stair company went broke.« Hemgesberg is annoyed about this. But it is the annoyance of a perfectionist. The little gap does not compromise the overall impression of the building: It is bright, friendly, functional, and in a spectacular environment. The laboratory building is located between three huge hot blast stoves, where air used to be preheated for furnaces in the past. Until up to a few years ago, steel production marked the city of Esch. The end of the coal and steel industry resulted in a drastic structural change: The former industrial site turned into a new home for the University of Luxembourg. The LCSB made the first move and relocated to Belval in late summer 2011.

During spring and summer the rush has been intense, trying to get everything ready in time to move. »Almost 70 craftsmen were working here at the same time;« says Hemgesberg. It was therefore necessary to plan the individual steps of the procedure beforehand and in detail.

These needed to be closely clocked, as states architect Jean-Luc Wagner, a partner in the architectural office WW+: »Shortly before the end of the year 2008, we were given the order to design and implement a laboratory building in Belval. The time frame for finishing was only two years.« In the end, it took nine months longer than that. »At the end of 2008, it was not clear yet who was going to use the building and to which objective,« says Jörg Weber, also a partner at WW+, »That Rudi Balling would establish a lab for systems biomedicine here, only materialised about a year later.«

Big laboratories, directly connected to offices and computer workplaces, matched the new director's visions. »We need direct exchange between researchers in the labs and the experts in bioinformatics and computational biology,« says Balling. He believes this is the only way to gain deeper understanding of molecular and genetic networks and develop new diagnosis and treatment techniques against Parkinson's Disease: »The spatial proximity between the research disciplines is perfectly situated in the new building in Belval,« says Balling.



The new »House of Biomedicine« in Belval is located between huge hot blast stoves.