

## Competition MRCS, Schifflange (LUX)

project 'Hudelen School Campus' to act as a link between nature and residential quarter  
awarding authority **Community of Schifflange (LUX)** team **WW+, Esch-sur-Alzette/Trier (LUX/GER), Dietrich|Untertrifaller Architekten, Bregenz (AT), BLS Energieplan, Luxembourg (LUX), ernst+partner landschaftsarchitekten, Trier (GER)** rendering **Stube 13, Zurich (CH)**  
gfa **7.452 m<sup>2</sup>** gv **42.772 m<sup>3</sup>** competition phase **07/2011 - 10/2011** restricted competition a **3rd price**

### Urbanism

At first glance, it seems outlandish to place a district school right on the outskirts of a residential quarter and not in the actual district centre, ensuring the shortest possible school routes for children. At second glance, the advantages of the school's location in direct proximity to the existing biotopes, which are to be preserved, and the quality of the future school path through the green axis of the residential quarter become apparent. The school as a public function offers a harmonious transition from nature to residential quarter, thereby creating a win-win situation between functionality, quality of living and nature protection. The school completes the residential quarter with clear building geometries that stand out from the residential structures and represents a unique feature within the urban framework. The structures are scattered and through their layout introduce nature into the residential quarter. A striking connection is created between the planned green corridor from the residential quarter and the forest biotope running in a north-south direction.

### Architectural concept school building

The school buildings directly adjoin this green artery and define the public space through projecting beyond the building line of the residential structures. The prestige value is reinforced by the fact that the building entrances have in each case been positioned on the north-south and east-west street axes. This highlights the public character of the buildings. The urban and open space integration of the school complex in its natural surroundings is achieved via the extension of the existing park, which continues in the form of a publicly accessible green belt along the Maison Relais and the Précoce buildings.

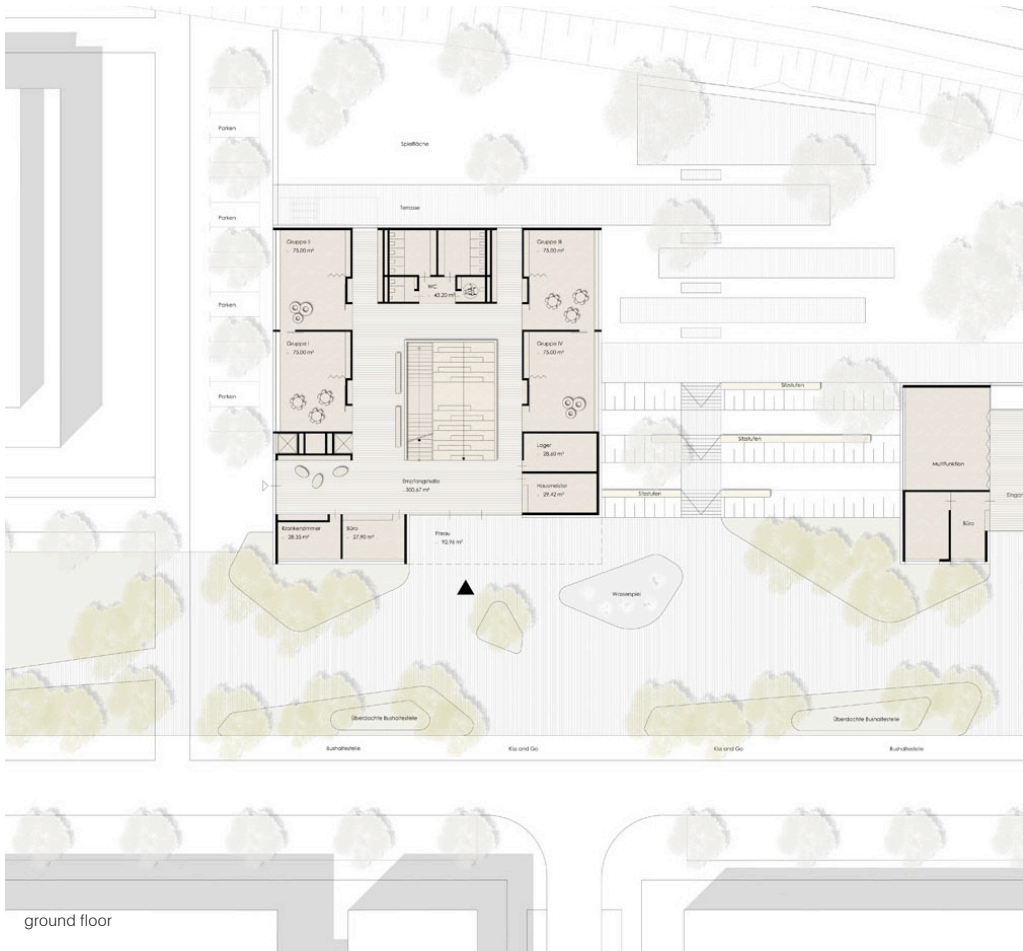
### Architectural concept Maison Relais

The Maison Relais building blends into the topography of the terrain and is accessed via the green area in front of it. The entrance area is clearly marked by an undercut structure. The building reveals itself as two storeys towards the green corridor and as three storeys towards the railway line. The cubic building unit shows a clear façade structure.





elevation



ground floor

