

Competition Secondary school Seeweier (GER)

project **Realization competition „Neubau Mittelschule am Seeweier“ (GER)** awarding authority **Große Kreisstadt Weißenburg i. Bay., Weißenburg i. Bay. (GER)** planning **WW+ architektur + management sàrl, Esch/Alzette (LUX) - Ernst und Partner Landschaftsarchitekten (GER)** floor space **7.229 m²** gross volume **30.277 m³**

Restricted international ideas- and realization competition with 24 participants

Urban development

The 2-story pavilion-like new building of the secondary school is will be constructed between the existing vocational school and the Seeweier wall, resp. the old town.

The street-facing, elevated projecting roof forms, together with the canteen building and the head of the secondary school, the urban edge to the Hagenau – the entrance to the school. The portico shields the schoolyard to the street and connects the two parts of the building.

That way a clearly defined urban figure is formed already from the 1st construction phase, grabbing the street space and providing stability to the viewing eye.

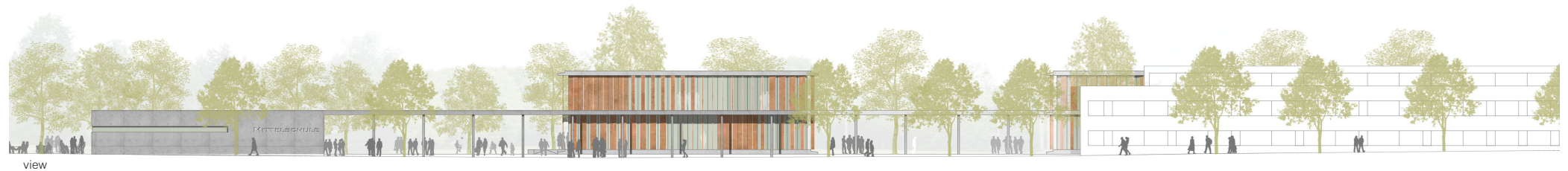
The building complex quotes the arch-shaped sway of the Seeweier, which clings to the city wall.

The main entrance of the new secondary school will be arranged to the west, facing the city, like it is at the existing Seeweier school.

The building complex orients to the old town, the exterior areas merge with the public greenery along the Seeweier and the existing park around the Stich villa.

The new multi-function sports hall, intended as a meeting place for big events, will get a forecourt, orients to the Hagenau and offers further parking space in the rear area.

The Mogettissa thermal bath is expanded towards the Hagenau and opens to it in form of a generously glazed façade, granting insights as well as views to the parkland and to the Seeweier. The gastronomy, which has to be newly designed, finds its extension in form of a bistro/beer garden in the outdoor area, between the thermal bath and the new sports hall, on the new tree-lined plaza.



view



Educational establishments in the park

„Green classroom“, small playground and school gardens are placed towards the park.
The existing “Hans-im-Glück“-fountain mediates at the new location between school and public space.

The school

Classrooms with nearly square ground plan allow for the most different forms of furniture, which can be adapted to the respective pedagogical requirements.

According to the change of the common teaching methods, several partition walls are designed in a mobile way in order to grant flexible space and provide variable classroom sizes.

Balustrade-free facades with suitable transparent fall protection devices offer a clear view outside. The sun/glare protection is assured by spatially displaced vertical lamella-curtains, providing sufficient view possibilities through arbitrary inclination.

The new work-rooms are planned in close proximity to the vocational school. The new work-courtyard will be located in the free space between the secondary school and the vocational school. Synergy effects may occur due to the mutual use of the work-rooms.

