

## Competition Residence Würzburg (GER)

project **construction of a residence with rearrangement of the Hofstraße** customer **City of Würzburg (GER)** planning **WW+, Esch/Alzette (LUX) - WGF Objekt Landschaftsarchitekten, Nürnberg (GER)**

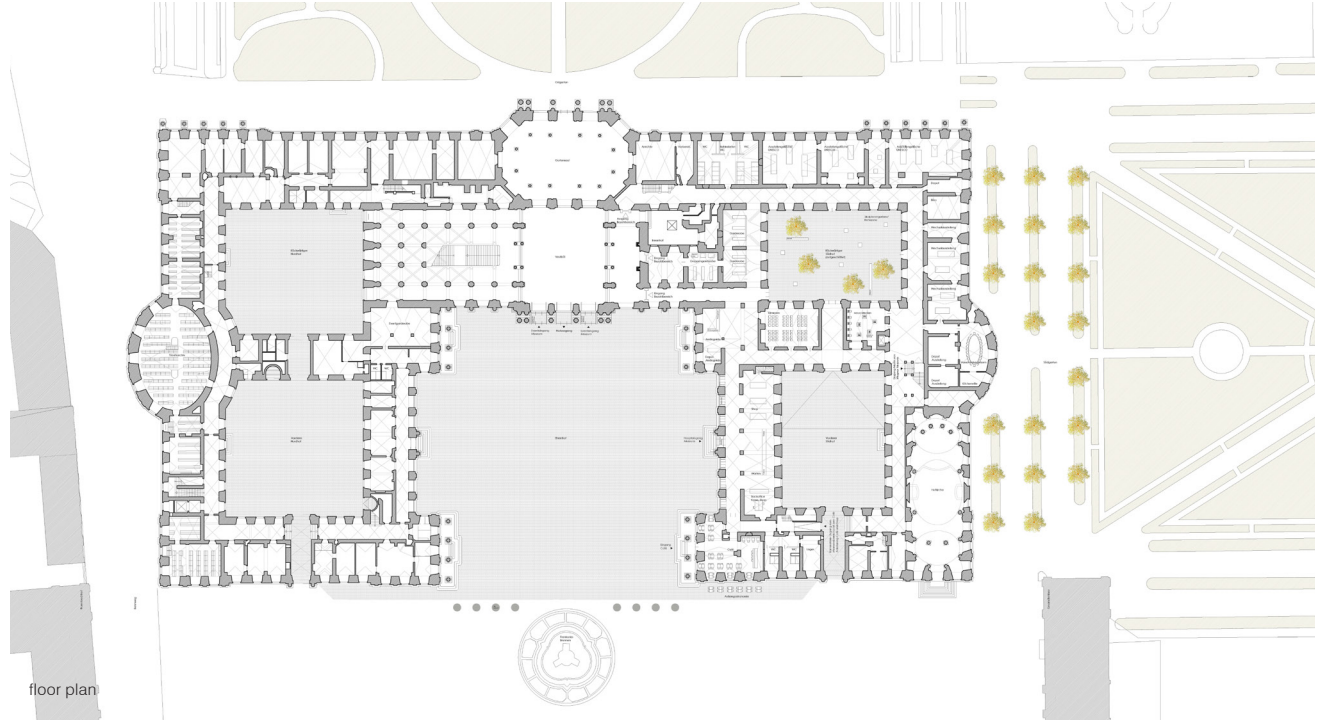
**Limited ideas competition with realisation part, 43 participants**

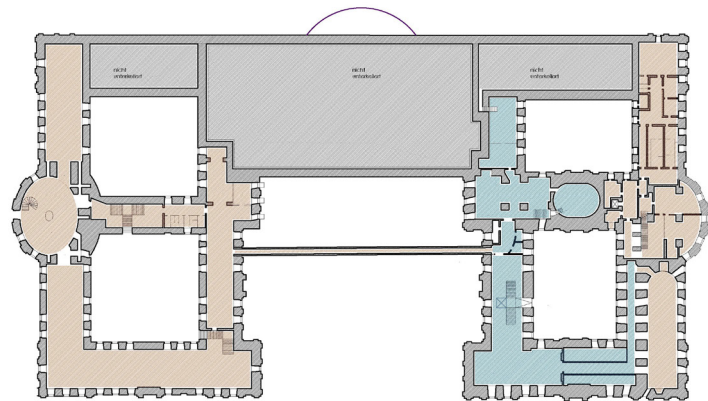
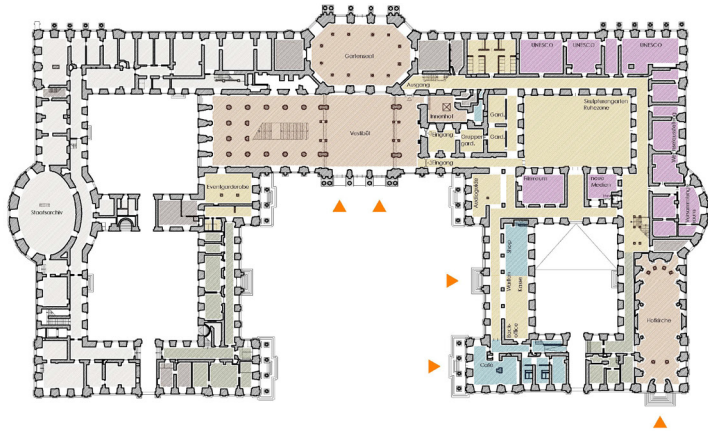
### Concept

In one of the available historical city plans the newly constructed residence in an open frame of gardens faces the hermetic historic centre whose still completely closed city wall is additionally strengthened by the moat ring. The only bridge existed between the Hofstraße and Residenzplatz, breaking through the fortification in this section. The ideal incitement for our concept was the particularly distinctive range of the city history, where the constructional contrasts of medieval and modern thinking faced each other in a high-contrast and symbolic way:

The historic centre and the residence, respectively Hofstraße and Residenzplatz, remain with their independent character as witnesses of successive epochs. The gap, in former times the moat and today being transformed through the green track of the city's rail system, contributes to this. Between Residenzplatz and former moat the green band strengthens the visibility and autonomy of the two development phases of the city and is conducive to the spatial structure, even without a tram.

However, the connection to the Hofstraße is re-established, on the one hand through the crossing of the green band in the historical wall opening, on the other hand through the continuation of the floor covering on the way the bishop had to take from his worldly to his churchly residence.





usage

