

Pavillon Niederanven (LUX)

Project	Construction of a new barbecue pavilion as part of a new park
Client	Community of Niederanven (LUX) / public client
Services	WW+, Esch-sur-Alzette (LUX) / Trier (GER) architecture services according to HOAI LPH 1-9
Open space Civil eng.	ernst + partner Landschaftsarchitekten, Trier (GER) Simon-Christiansen & Associés, Capellen (LUX)
Photographs	Linda Blatzek, Trier (GER)
Facts	<ul style="list-style-type: none">• massive wood construction build in low energy construction method• façade out of domestic wood• clubroom for the boule club including an outdoor barbecue grill

Dates and numbers

Gfa	75 m²
Ufa	65 m²
Gv	180 m³
Net construction c.	185.096 €
Total gross costs	212.860 €
Start of planning	03/2013
Realisation	05/2015 - 09/2015

Barbecue hut Niederanven

Designed as an interpretation of a contemporary barbecue hut, a scaled-down building structure is created with simple, low-key details. The focus of the design idea is the harmonious interaction between on the one hand tradition, local design and choice of regional building materials and on the other hand overall local character.

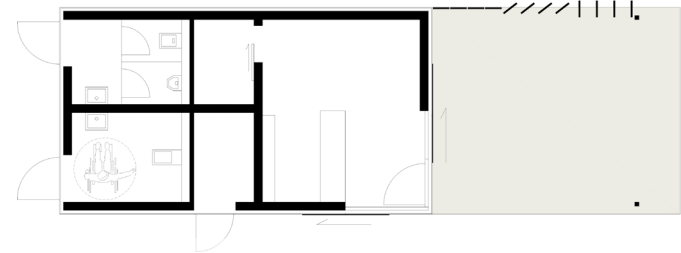
The façade features vertical wooden battens and is kept closed. Nevertheless, large 'barn doors' enable the building and space to be used in several flexible ways, resulting in a play of façade. When the doors are open, expansive views are revealed into the barbecue hut interior, which consists of a simple room, strongly oriented towards the exterior area (playground, barbecue area and skate park) with a generous, covered outdoor area and designed with an open and flowing layout. When the barn doors are closed, an introverted space is created with an integrated storage area. The auxiliary functions (toilets for women/disabled access, toilets for men and equipment area) are accessed from the outside and retain the underlying idea of a monolithic timber structure thanks to door elements that are flush with the façade.

Regional aspects regarding the preservation of originality and harmonious homogeneity exert great influence on the design. The adaptation to the surroundings and the reflection of the structure's function as a barbecue hut have resulted in the choice of wood in a solid construction (board stack elements) with a wooden strip curtain façade as well as typical barn elements (sliding doors). Also in accordance with a holistic approach, wood was deliberately chosen as a robust, durable and sustainable material, which is easy to maintain and remains attractive over a long period of time.





site plan - ernst+partner landschaftsarchitekten



ground floor



elevation - open



elevation - closed