

Kiosk in the park Molter, Mondercange (LUX)

Project **New construction of a kiosk in the heart of the park in Mondercange**

Client **Community of Mondercange (LUX), public**

Participation **Limited competition with participation compensation**

Services **WW+, Esch-sur-Alzette (LUX) / Trier (GER) architecture**

- Facts
- integration of the kiosk into the existing topography
 - bistro / take-away
 - public toilet facility for the park
 - wood-concrete hybrid construction
 - accessible roof with steps leading up to the roof for sunbathing and a panoramic view over the entire the entire park
 - a green pergola extends the shape of the building
 - picnic area at the foot of the kiosk

Dates and numbers

gfa **194 m²**

ufa **114 m²**

gv **194 m³**

total area **0,03 ha**

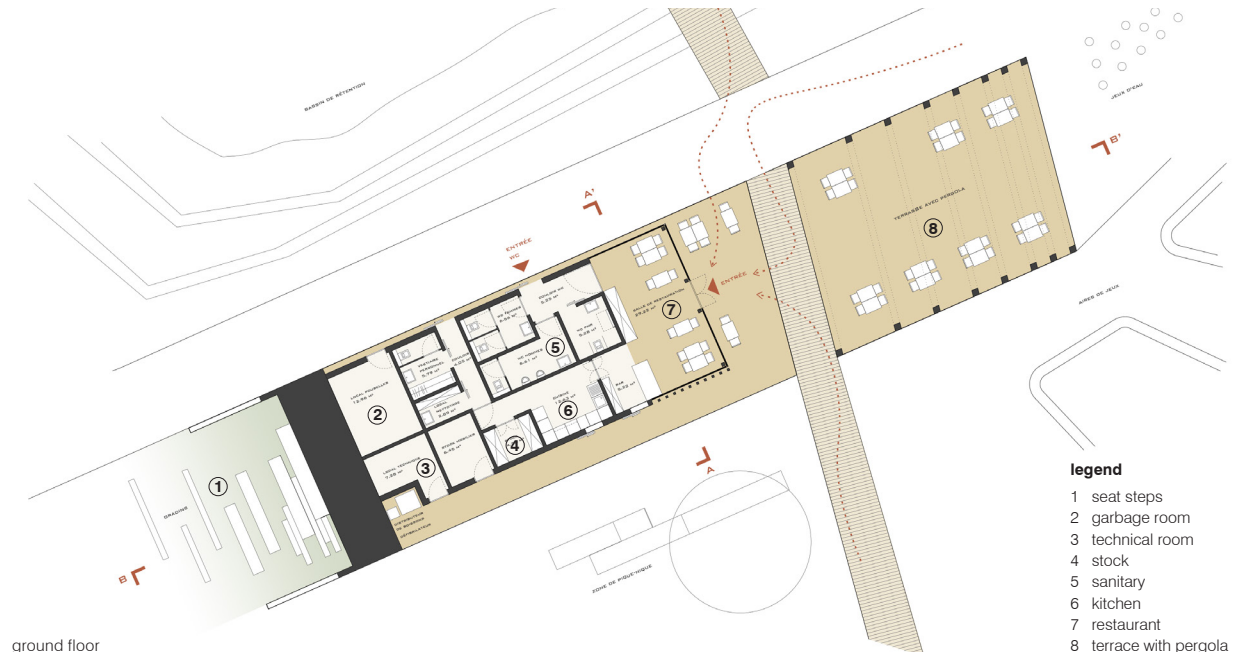
construction costs **1.098.092 € net**

costs total **1.628.360 € gross**

competition **10/2020 - 12/2020**



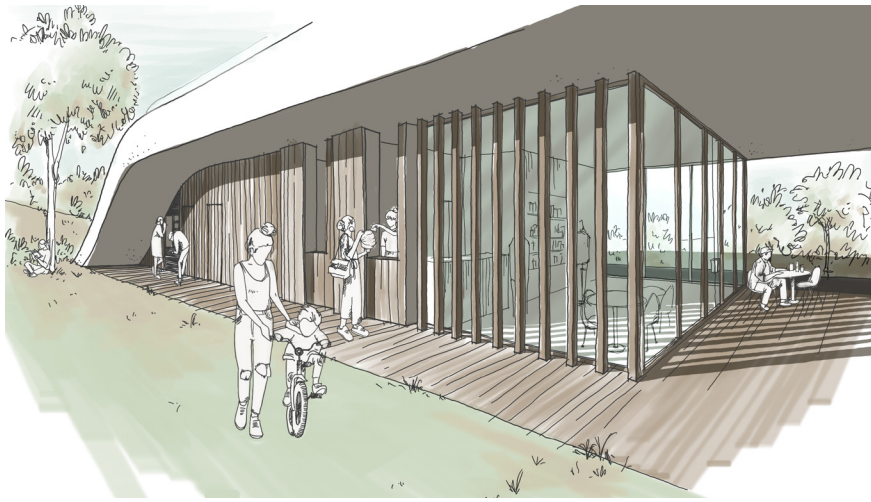
siteplan of the parc



ground floor

legend

- 1 seat steps
- 2 garbage room
- 3 technical room
- 4 stock
- 5 sanitary
- 6 kitchen
- 7 restaurant
- 8 terrace with pergola



The park in relation to its surroundings

Molter Park, in the heart of Mondercange, is a recreational and leisure area for the citizens of the village. With its main pedestrian axis lined with timber, it is the link and the green heart that stretches from northwest to southeast along the Kaazebach. Another circular arterial road crosses the park from northeast to southwest. It connects the two parkings, provides access to the residential area to the north of the park, and runs along the main activities. Playgrounds and sports fields are located along this route. At the southern intersection of these two veins we find the kiosk, which becomes the service area for the green heart of Mondercange.

Architectural concept of the kiosk

The circular path encloses a lawn that extends in waves from the watercourse to the outer-bounds, defining the simple and open basic structure of the park. These waves of lawn have their deepest starting point in the Kaazebach. They rise outward parallel to the undulating flow and are oriented to the existing topography. The waves of the lawn create a kind of sculpture of the earth with wave valleys of varying depths. They provide opportunities for play or even for lying down. In this way, they allow a sequence of different spatial impressions.

Although the kiosk will play an important role in the park, it is important that it is integrated into the park structure. Both must form a harmonious and lively whole. The goal is to model the green spaces in such a way that there is room for a discreet building.

The architecture here plays with nature. The kiosk comes like a wave, lifting the ground and curling into its hollow. Thus, it adapts to its surroundings and offers the user different angles of view. The silhouette of the building is reflected in the water of the retention basin.

It is an architecture that reflects the landscape of the park and lives in complete symbiosis with the site.

